

June / July 2018

**SCULPTURE  
NAVALE**

A nomadic residency

**Calendar** we will be on journey for 2 months, from June to July 2018.

**fr** | nous serons en itinérance pendant 2 mois, de juin à juillet 2018.

**de** | wir werden 2 Monate unterwegs sein, vom Juni bis Ende Juli 2018.

Amsterdam (NL)

Phase 1

4 / 9.06

ADM

Franeker (NL)

Phase 2

11 / 30.06

Shipdock Draaisma b.v.

Hamburg (DE)

Phase 3

2 / 8.07

Honigfabrik  
Hafenumuseum Hamburg  
das Archipel

Franeker (NL)

Phase 4

10 / 29.07

**Log book** here you can follow us, find more infos, updates and news about the nomadic residency *Sculpture Navale* and *Barkasse*.

**fr** | vous pouvez suivre l'actualité de la résidence nomade *Sculpture Navale*, et obtenir davantage d'informations à propos de *Barkasse* en consultant notre journal de bord.

**de** | hier können Sie Infos und Bericht über die nomadische Residenz *Sculpture Navale* und *Barkasse* erfahren.

[barkasse.collectifmit.fr](http://barkasse.collectifmit.fr)

**INSTITUT  
FRANÇAIS**

Selected project of the residency program *Les collectifs d'artistes* of the Institut Français  
Projet lauréat des résidences *Les collectifs d'artistes* de l'Institut Français

## SCULPTURE NAVALE

The collective work of research & creation *Sculpture Navale* will be on the way from June to July 2018 in Amsterdam, Hamburg and Franeker (Netherlands and Germany). These project is a travelling residency supported by Institut Français.

*Sculpture Navale* is an experimental and artistic process. It will experience the matter which many boats are made of: **steel and water!**

### We will:

- immerse ourselves into the environment of naval architecture and shipbuilding
- get in contact, explore, interact and learn from inhabitants of the **water milieu**
- **learning by doing:** familiarize ourselves with technical habitus and learn about the structural, formal and plastic properties of the material.
- **collect know-how** from experts and not-expert of the shipbuilding and improve it through sculptural experiments.
- an **opensource process:** sharing stories, experience and know-how
- weld, cut, bend, shape, forge, rivete, float, etc...



## WATER MILIEU & 25 TONNES OF STEEL

We think water as a common good (it belongs to everybody). We are interested in nomadism, alternative ways of living and working together. These theoretical approach leads our research and inspiration.

We will work on the hull of a special steel workboat of Hamburg's harbour, used from the late 19th century to the sixties, discovered in a shipyard in Friesland. Of this *Barkasse*, only its hull with its 25 tonnes of steel remains: it will be the filter of research and the support of creation for *Sculpture Navale*.

This particular *Barkasse* is probably one of the latest ones stemming from the shipyards of the Elbe estuary. Its materiality evokes the characteristic know-how of shipbuilding in the middle of 20th century: five to six millimetre thick steel, welded steel sheet, riveted structure, frames every twenty centimetres. Its tumblehome shape, its roundness curving till the salient bow, 14.66 m long, 4.14 m large. Draught about 1.10 m.

Since 2015, we have organised several working phases in order to renovate it. These preliminary technical steps have provided a healthy structural basis for artistic production.

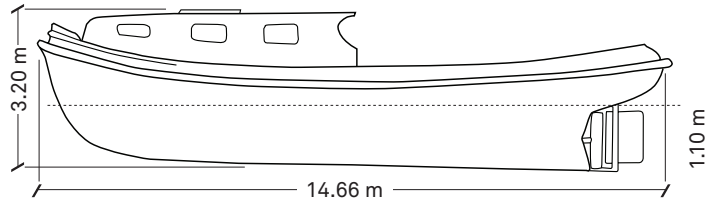
Barkasse

2014 Found in Franeker

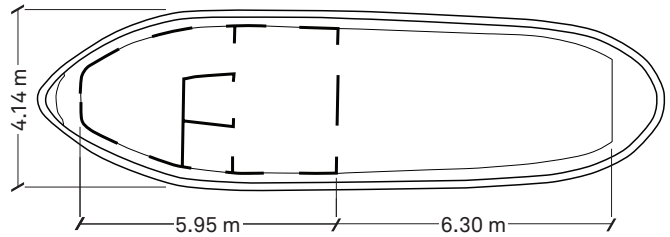


2015 Start of renovation

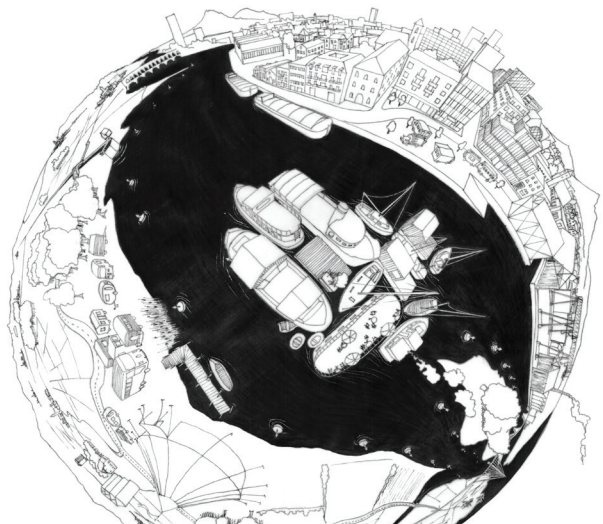
2017 Habiter L' Eau



2018 Sculpture Navale



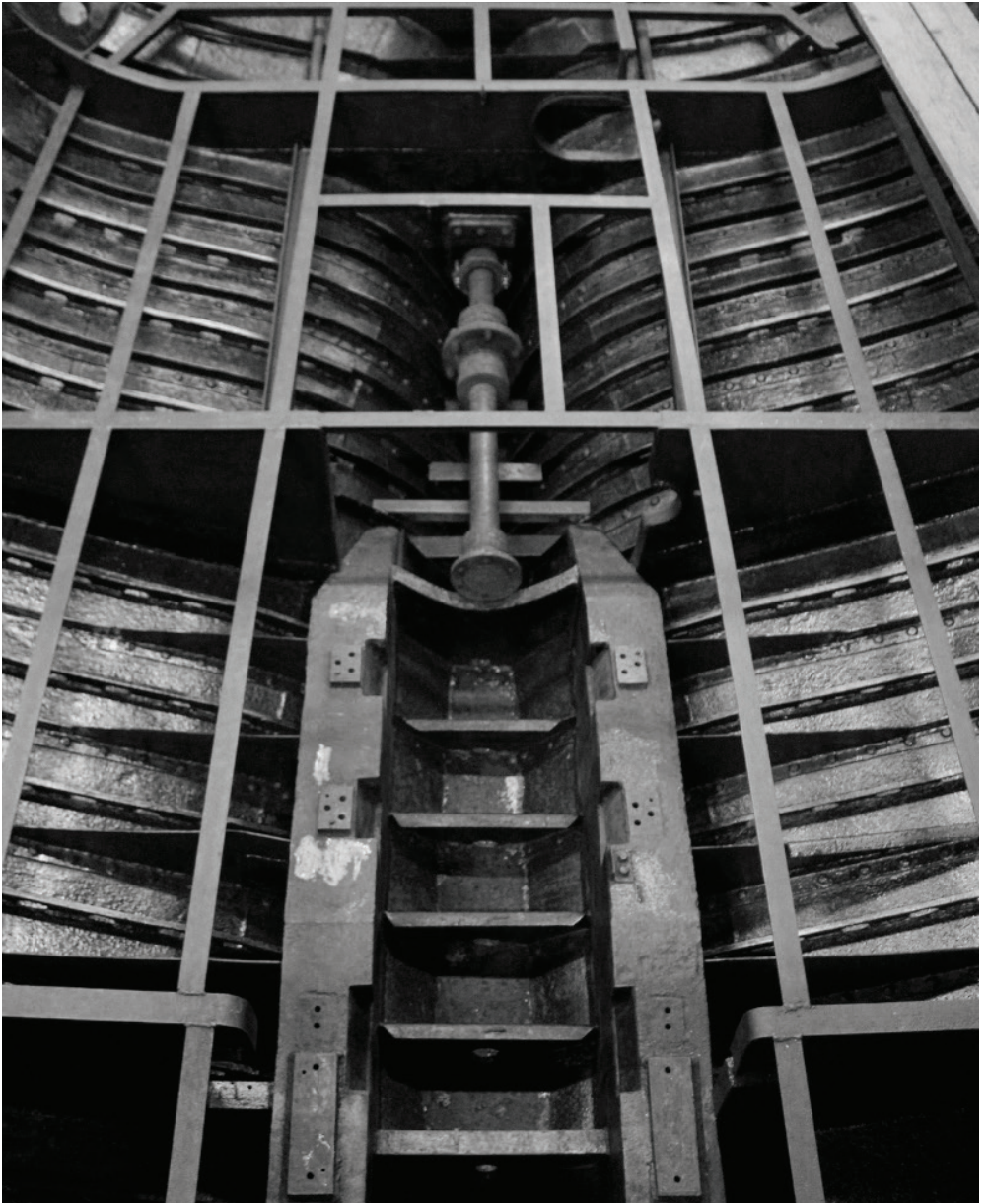
20xx Floating!



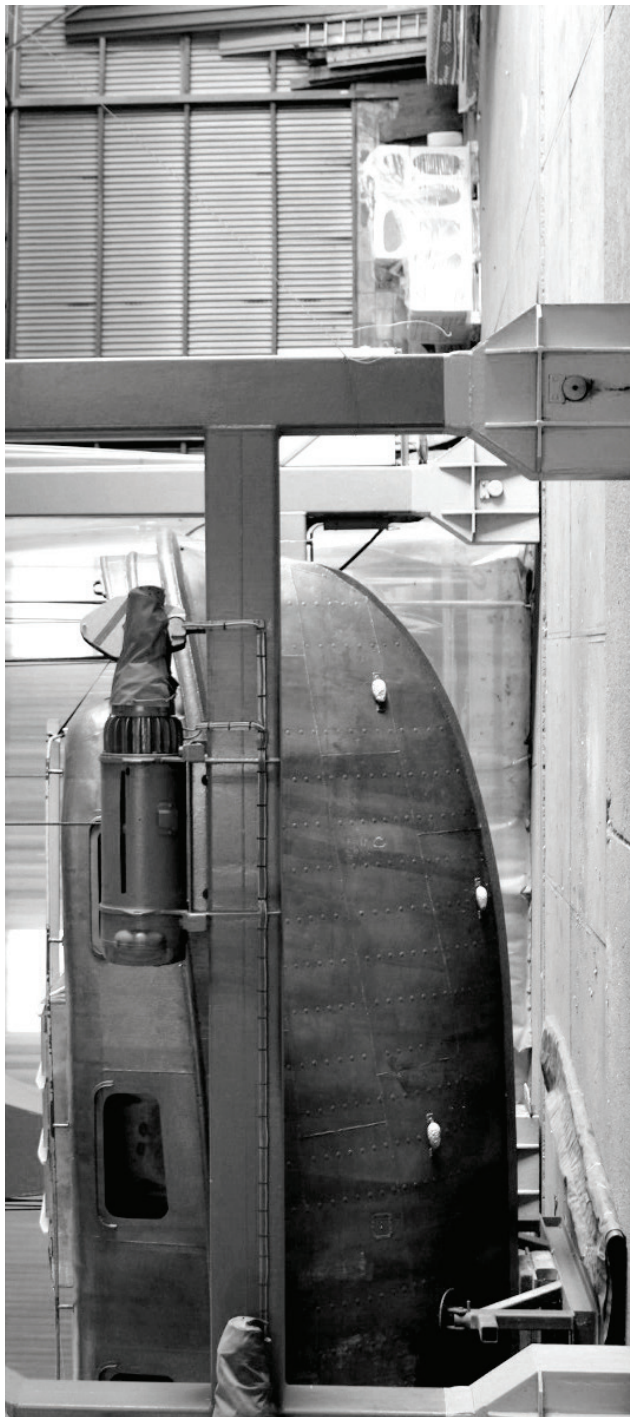














## INTERACTION

During *Sculpture Navale* we will work on *Barkasse* and on a nomadic medium, we call it **artefact**:

The artefact is a sculpture and an interaction tool to allow communication and learning by doing. We will work and experiment on it different technics of shipbuilding.

It is an open form and its shape will be the result of the researching process and the interactions with experts and non-experts from the water milieu.

**Through the artefact, we bring *Bar-kasse* on travel:**

- In the first phase in **Amsterdam** (NL) we will look for leftovers material to begin the construction of it.

- In **Franecker** (NL) : we will be preparing the mobile skeletons (structure) of the artefact and of *Barkasse*.

- In **Hamburg** we will reserach about the tecnics and the history of steel shipbuilding: « Do you have knowledge ? Put it on the artefact ! »

- In the second session in **Franecker** we will work on steel, on *Barkasse* and share the sculpting experience that we collected on travel.

ON BOARD Fabien Bidaut, Claire Mélot,  
Andréas Campagno, Alice Leloup, Anaïs  
Fotinatos, Federica Teti, Julien Artus



## ÉQUIPAGE

We are an international group of architects and artists. The center of our artistic practice is participative process, matter handling, experimental building, research and share of know-hows. We are members and collaborators of **mit**, a french collective active since 10 years. In 2017 we organized the event *Habiter l'Eau* (living the water) in Bruxelles, focusing on nomadic living and the water milieu.

**fr** | Nous sommes un groupe international d'architectes et d'artistes. Les processus participatifs, la manipulation de la matière, la construction expérimentale, la recherche et l'échange de savoir-faire sont au centre de notre pratique artistique. Nous sommes membres et collaborateurs de **mit**, un collectif français actif depuis 10 ans. Nous avons organisé en 2017 les

rencontres *Habiter l'eau* à Bruxelles, sur les thématiques de l'habitat nomade et du milieu de l'eau.

**de** | Wir sind eine internationale Gruppe von Architekt\*innen und Künstler\*innen. Partizipative Prozesse, Materiehandlung, Experimentelle Bauarbeit, Forschung und Austausch von Wissen sind die Mittel unsere Kunstpraxis. Wir sind Mitglieder\*innen und Mitarbeiter\*innen von **mit**, ein französische Kollektiv aktiv seit 10 Jahren. In 2017 haben wir die Veranstaltung *Habiter l'eau* (das Wasser bewohnen) in Brüssel organisiert über das Thema: Nomadisches Wohnen und das Wassermilieu.

---

## CONTACT

MAIL [sculpture.navale@gmail.com](mailto:sculpture.navale@gmail.com)

WEBSITE [barkasse.collectifmit.fr](http://barkasse.collectifmit.fr)

PHONE Fabien Bidaut  
+33 6 33 78 20 72  
+49 175 325 44 01